

Access Guide

Arrival, Ticketing and Car Parking Facilities

Turn into Blair Castle and Gardens from the road that runs through Blair Atholl village (B8079). Go through the main gates and up the driveway.

Towards the top you will see a grey ticket booth.

Please stop at the ticket booth and present your online ticket or request to buy a ticket.

Please make ticketing staff aware of any disabled persons and carers in the vehicle.

A carer of a disabled person is given free entry. This ticket will be issued at the ticket point. If you have already purchased an online ticket and you are a carer you can receive a refund on entry at the ticket booth.

You will be given a welcome booklet containing a map of the castle, grounds and gardens. A more detailed map is available on request, with additional information to assist persons requiring detailed accessibility information.

Car Parking

Main car park

The main car park is a gravel surface and is located 204 meters away from the castle and has space for 160 cars and 10 coaches.



Accessible Parking Area

We do have an accessible parking area with 4 spaces beside the castle which is laid with tarmac.

On arrival at our ticket office, please ask for assistance and directions to this area.



Visiting the castle

The castle has 30 display rooms to view over three floors which can take up to 1 hour. There are guides to help with questions and assistance throughout the castle.

If you need to leave the castle at any point or have quick access to the toilets on the ground floor during your visit, please speak with one of our guides and they will help lead you to the nearest exit point. Guides are available throughout the castle and on every floor.

Assistance dogs

We welcome assistance dogs into the castle, grounds and gardens.

Main castle entrance

The surfaces from the main car park to the castle entrance is a mixture of gravel and tarmac. The main castle entrance is through the front door. This involves climbing 10 wide steps with no handrails.



Accessible entrance

The Banvie Hall is situated next to the accessible parking area. This is the main exit from the castle tour and also serves as the accessible entrance.

Manual wheelchairs, mobility scooters and anyone who can't manage steps are able to access the ground floor of the castle via our Banvie Hall.

A member of the castle team will guide you through to the main entrance hall from the accessible Banvie Hall entrance so that you are able to start your castle tour.



Castle ground floor

We have eleven display rooms on our ground floor which is fully accessible:

- The main entrance hall.
- Room 1 - The Stewart Room - information on the history of the castle and Atholl family.
- Room 2 – Earl John's Room - showing the 15 minute video of the castle and grounds.
- The Butlers Pantry – Life Below Stairs interactive exhibition.
- Room 25 – The Terrace Room – display of uniforms and accessories.
- Main Stair – Lord Glenlyon's armour on horseback, polar bear and birds.
- Room 26 – The Atholl Highlanders Room
- Room 27 – 8th Duchess of Atholl – Exhibition about Duchess Kitty's extraordinary life.
- Room 28 – The Jacobite Room – Exhibition detailing the history and battles of the Jacobite's.
- Room 29 – The Ballroom
- Room 30 – The China Room – an extensive display of china and embroidery.

Room 2 shows a 15 minute rolling video of a visit around the upper floor castle rooms, gardens and grounds, with English subtitles.

The Gift Shop and Tullibardine Restaurant are also on the ground floor.

Upper floors of the castle

Unfortunately, we don't have any lifts within the castle, so to gain access to the rooms upstairs does involve climbing staircases.

The upstairs of the castle is regrettably not accessible for wheelchairs and mobility scooters.

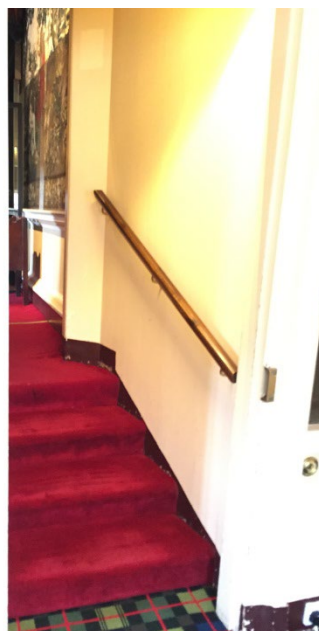
Our Picture Staircase, which takes you from the ground floor to the first floor, has 23 steps including two landings. We have chairs available throughout the route.



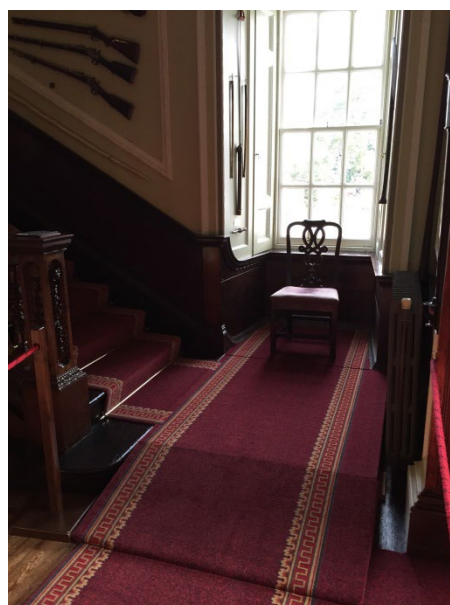
From the first to the second floor, we have a spiral staircase. This staircase has 32 steps.



On the second floor, one of our rooms is lower than the rest. There are 4 steps down from our Drawing Room to our Tullibardine Room and then 4 steps up to our Tapestry Bedroom.



Coming downstairs from the second to the ground floor, there are 30 steps between the second and first floors then after the landing another 20 steps finishing in a small ramp at the bottom of the staircase.



Blair Castle Wheelchair and Mobility Scooter

The castle has one manual wheelchair for visitors to borrow during their visit.

There is one mobility scooter for visitors to use during their visit and allows access to the gardens.

Our scooter can be reserved by calling the castle or is available on a first come first served basis on arrival at the castle.

Toilets

We have two sets of toilets within the castle; all are located on the ground floor.

An accessible, unisex toilet and baby changing facilities are in the Banvie Hall, as shown below.



Tullibardine Restaurant

Our restaurant is situated at the north end of the castle, next to the Banvie Hall and is wheelchair accessible.

Our restaurant is open daily from 10am, serving hot meals, cakes and a variety of beverages. The furniture within the restaurant is moveable.

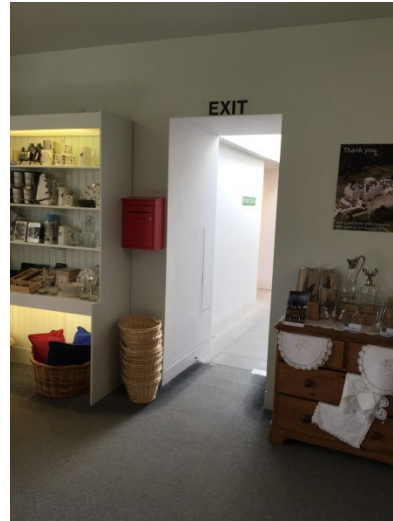
Please ask a member of staff if you require any assistance, all staff will be wearing a Blair Castle name badge.



Gift Shop

The gift shop is located at the end of the castle tour at the north end of the castle and is open daily 10am until 5pm.

The shop is fully accessible for wheelchairs. There is a turn stile on leaving the last exhibition room that gains access into the gift shop. If you require wheelchair access into the gift shop, please press the bell for a staff member to come and remove the turn style for you.



Visiting the gardens and grounds

Surfaces around the ground and gardens include tarmac, gravel, grass and woodland paths.

There are sloped areas that may be difficult to push manual wheelchairs up and down. Please ask a member of staff for guidance if you are unsure of where you can easily access outside areas.

Please review our Accessibility Map for guidance of where a mobility scooter can be taken around the garden and grounds.

Contact Details

If you have any queries regarding accessibility to Blair Castle & Gardens and your visit with us, please do get in touch.

Telephone: 01796 481207

Email: bookings@blair-castle.co.uk

Website: www.blair-castle.co.uk

Office hours: Monday to Sunday 9am – 5pm